



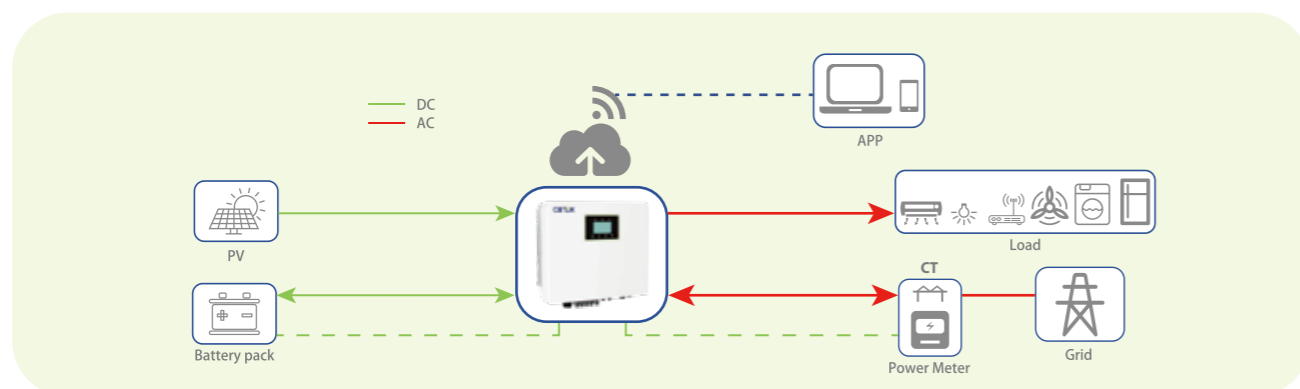
Hybrid-EU Three Phase HV

CB-IV8K-TH-EU

CB-IV10K-TH-EU / CB-IV12K-TH-EU

Features

- UPS level switching time (<10ms) supporting critical loads all the time.
- Flexible schedule for inverter charging and discharging time.
- Support three-phase imbalance on backup output port.
- 2 MPPT and 4 DC input; Max 26A DC input current.
- Degree of protection: IP66.



MODEL	CB-IV8K-TH-EU	CB-IV10K-TH-EU	CB-IV12K-TH-EU
DC INPUT(PV)			
Recommended max. PV power	12KW	15KW	18KW
Max. input voltage		1000V	
Rated input voltage		600V	
Start-up voltage		200V	
MPPT voltage range		200-850V	
Max. input current		26A/26A	
Max. short circuit current		39A/39A	
MPPT number/Max. input strings number		2/4	
DC INPUT/OUTPUT (BATTERY)			
Battery type		Li-ion	
Battery voltage range		<10ms30A	
Max. charge/discharge power	15kW		10kW
Max. charge/discharge current		30A	
AC OUTPUT			
Rated output power	8kW	10kW	12kW
Max. output power	8.8kW	11kW	13.2kW
Rated output current	12.1A	15.2A	18.2A
Max. output current	13.4A	16.7A	20A
Back-up switch time		<10ms	
Rated grid output voltage/frequency		3L/N/PE 380V/400V 50Hz/60Hz	
Power factor		0.8 leading . . . 0.8 lagging	
THDv (@linear load)		<3%	
AC INPUT			
Max. apparent input power	8.8kVA	11kVA	13.2kVA
Max. input current	13.4A	16.7A	20A
Rated grid input voltage/frequency		3L/N/PE 380V/400V 50Hz/60Hz	
GENERAL			
Max. efficiency		98.1%	
Safety/EMC		IEC62109-1/-2/IEC61000-6-1/IEC61000-6-3	
Cooling concept		Natural	
Degree of protection		IP66	
Operating ambient temperature		-25 ~ +60 C (>45 derating)	
Max. operation altitude		3000m	
Communication		RS485/WIFI/GPRS/LAN	
Weight		27.5kg	